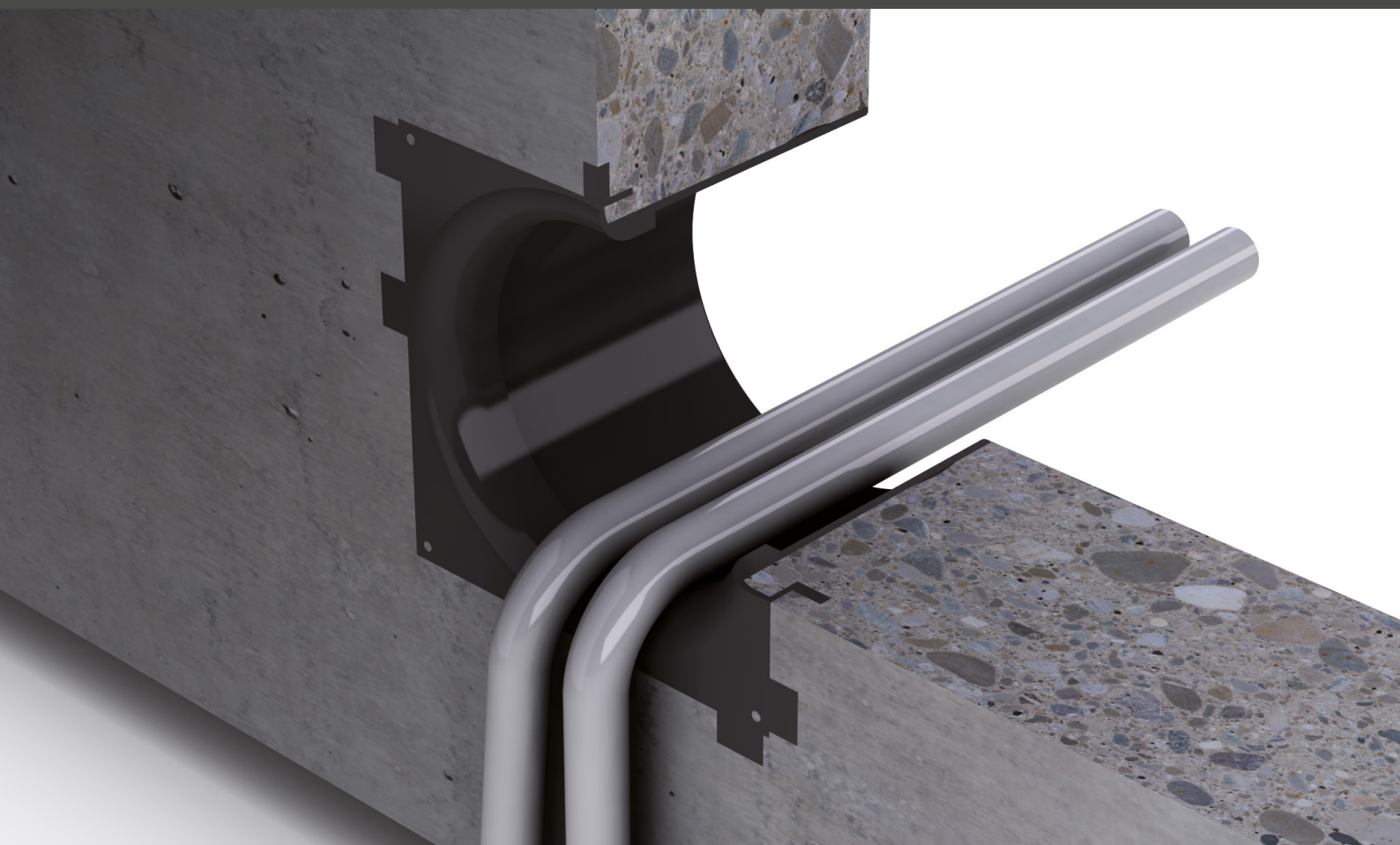


KT 110

KT 125

KT 160

Cable funnels for shafts



**24 hour delivery
service**
upon request

**Quality
guarantee**
on all products



**Worldwide sales
network**
for you locally

Service hotline
Tel. +49 7324 9696-33
We are happy to help you

The smart way of laying cables

Cable funnel KT from UGA

Service hotline

Tel. +49 7324 9696-33

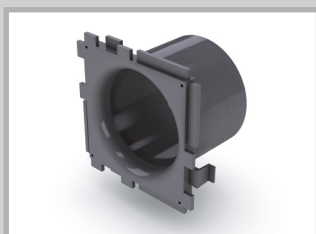
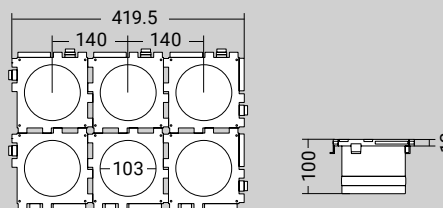
We are happy to help you

► Function

The cable funnel KT enables fast, reliable and gentle feeding of cables into pipe shafts. The rounded edges prevent damage to the cable insulation. The cable funnels KT are available in three different sizes with four different sleeve variants for pipes with an outside diameter of 110 mm, 125 mm and 160 mm. Multiple elements can be placed on top of and next to each other to create a battery. Unoccupied cable funnels can be easily sealed with the blind cover BV.

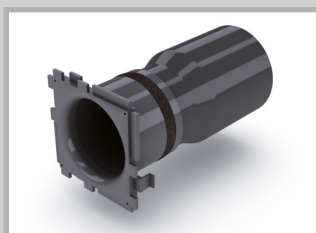
► Advantages

- Protection of cable insulation
- Fast and simple assembly
- Assembling in batteries
- No additional casing aids required



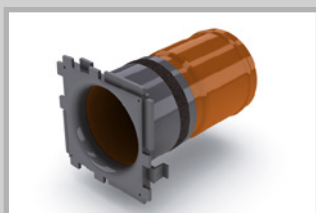
Cable funnel with adhesive sleeve

Order number	Centre distance A	Minimum wall thickness	Suitable for cable protection pipe	(D) Øa
KT110/(L)	140 mm	100 mm	smooth	110 mm
KT125/(L)	180 mm	100 mm	smooth	125 mm
KT160/(L)	208 mm	100 mm	smooth	160 mm



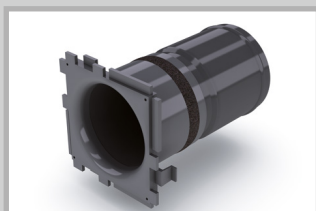
Cable funnel with adhesive sleeve and sealing system

Order number	Centre distance A	Minimum wall thickness	Suitable for cable protection pipe	(D) Øa
KT110-KM/110/(L)	140 mm	100 mm	smooth	110 mm
KT110-KM-WR/111/(L)	140 mm	100 mm	corrugated*	111 mm
KT125-KM/125/(L)	180 mm	100 mm	smooth	125 mm
KT125-KM-WR/126/(L)	180 mm	100 mm	corrugated*	126 mm
KT160-KM/160/(L)	208 mm	100 mm	smooth	160 mm
KT160-KM-WR/162/(L)	208 mm	100 mm	corrugated*	162 mm



Connecting sleeve as KG pipe sleeve EFL (single lip seal)

Order number	Centre distance A	Minimum wall thickness	Suitable for cable protection pipe	(D) Øa
KT110-SM-EFL/110/(L)	140 mm	130 mm	smooth	110 mm
KT125-SM-EFL/125/(L)	180 mm	130 mm	smooth	125 mm
KT160-SM-EFL/160/(L)	208 mm	130 mm	smooth	160 mm



Connecting sleeve as cable protection pipe sleeve MFL (multiple lip seal)

Order number	Centre distance A	Minimum wall thickness	Suitable for cable protection pipe	(D) Øa
KT110-SM-MFL/110/(L)	140 mm	130 mm	smooth	110 mm
KT125-SM-MFL/125/(L)	180 mm	130 mm	smooth	125 mm
KT160-SM-MFL/160/(L)	208 mm	130 mm	smooth	160 mm

(L) = Wall thickness in in mm

(D) = Outside diameter of the pipes

* Please specify the actual outside diameter of the corrugated pipe!

UGA SYSTEM-TECHNIK GmbH & Co. KG

Heidenheimer Str. 80 – 82, 89542 Herbrechtingen,
Germany

Tel. +49 7324 9696-0, Fax +49 7324 9696-96

info@uga.eu, www.uga.eu

We shall supply replacements for all parts that impair functionality due to material defects. No replacements will be provided for defects that are due to transport or storage or are caused by incorrect processing or installation or consequences of such. Our information is based on current technical knowledge. Subject to technical changes. Because of the abundance of possible influences during assembly and use, our information does not exempt processors and users from their own trials and tests. The corresponding installation instructions apply to all UGA products.