

GE

Building grounding



24 hour delivery service
upon request

Quality guarantee
on all products



Worldwide sales network
for you locally

Service hotline
Tel. +49 7324 9696-33
We are happy to help you

► Safely grounded whatever the situation

UGA building groundings GE are available in numerous versions: as duct, reinforcement and potential grounding, in flexible or rigid design and as a version for retrofitting. They are available in almost all lengths and are encased in concrete in the wall or ceiling, flush with the formwork. For special requirements, please contact our technical department.

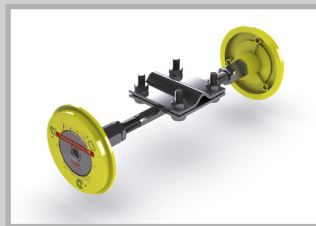
► Advantages and uses

- Suitable as measuring point
- Stainless steel version
- Grounding connection points available for all use cases (not included)
- Robust connection thread M12 or M16
- Permanent marking of grounding
- Each grounding is subjected to a short-circuit test at UGA



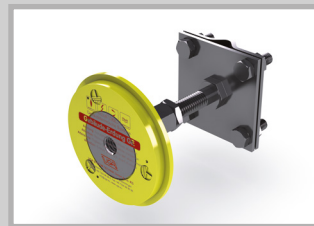
Duct grounding GE-D/(L)
Rigid, insulated duct to be encased flush in concrete; on both sides with connection M12 or M16

Product name:
GE-D/(L)/V4A/(M12/M16)
(L) = Wall thickness in mm



Duct potential grounding GE-D-P/(L)
Rigid duct to be encased flush in concrete; With cross clamp welded in the middle (made of hot-dip galvanized steel), on both sides with connection M12 or M16

Product name:
GE-D-P/(L)/VZ/(M12/M16)
(L) = Wall thickness in mm



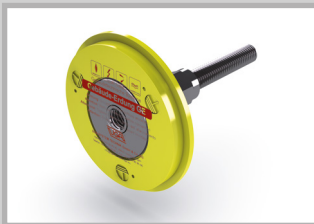
Potential grounding GE-P
Rigid grounding point to be encased flush in concrete; With cross clamp welded (made from hot-dip galvanized steel) for connection of grounding systems, ground connections and reinforcements. With connection M12 or M16

Product name:
GE-P/(L)/VZ/(M12/M16)
Standard length: approx. 120 mm



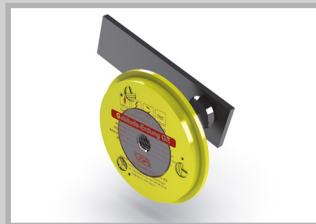
Flexible penetration grounding GE-FD/(L)
Flexible, insulated duct to be encased flush in concrete; on both sides with connection M12. For wall thickness from 150 - 500 mm

Product name:
GE-FD/(L)/V4A/(M12/M16)
(L) = Standard length 500 mm or 320 mm



Reinforcement grounding GE-A/(L)
Rigid grounding point for connecting to reinforcement and for encasing flush in concrete. With M12 connection

Product name:
GE-A/(L)/V4A/(M12/M16)
(L) = Grounding length in mm



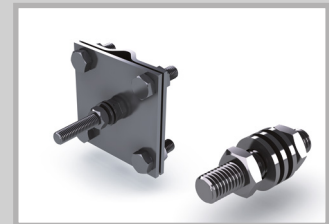
Reinforcement grounding with iron strip 40 x 5 GE-AB
Rigid grounding point with welded iron strip (made from St37 steel) for welding with the reinforcement and for encasing flush in concrete. With M12 connection

Product name:
GE-AB/(L)/St37/(M12/M16)
Standard length 70 mm
Length of iron strip: 300 mm



Subsequent duct grounding GE-ND
Rigid duct for retrofitting; One side with connection M12 or M16, other side with cross clamp

Product name:
GE-ND/(L)/V4A/(M12/M16)
Standard wall thicknesses:
250 mm and 420 mm



Flat-round connectors
Product name:
GE-FRV/(L)/(VZ/V4A)/(M12/M16)

Connection bolt M12/M16
Product name:
GE-ABM/(L)/(VZ/V4A)/(M12/M16)

Both connection elements are available in galvanized = VZ (for internal connection) and in stainless steel A4 = V4A (for external connection)