

# GE

## Building earthing



24 hour delivery  
service

Quality  
guarantee



Worldwide sales  
network

Service hotline  
+49 7324 9696-33

### ► Safely grounded in any cases

UGA building earthings GE are available in numerous versions: as entry, reinforcement and potential earthing, in flexible or rigid design and as a version for retrofitting. They are available in almost all lengths and are encased in concrete in the wall or ceiling, flush with the formwork. For special requirements, please contact our technical department.

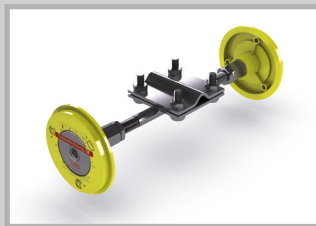
### ► Advantages and uses

- Suitable as measuring point
- Stainless steel version
- Earthing connection points available for all use cases (not included)
- Robust connection thread M12 or M16
- Permanent marking of earthing
- Each earthing is subjected to a short-circuit test at UGA



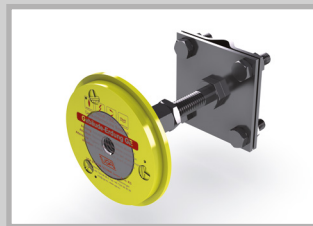
**Entry earthing GE-D/(L)**  
Rigid, insulated entry to be encased flush in concrete; on both sides with connection M12 or M16

Product name:  
**GE-D/(L)/V4A/(M12/M16)**  
(L) = Wall thickness in mm



**Entry potential earthing GE-D-P/(L)**  
Rigid entry to be encased flush in concrete; With cross clamp welded in the middle (made of hot-dip galvanized steel), on both sides with connection M12 or M16

Product name:  
**GE-D-P/(L)/VZ/(M12/M16)**  
(L) = Wall thickness in mm



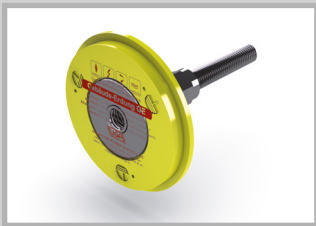
**Potential earthing GE-P**  
Rigid earthing point to be encased flush in concrete; With cross clamp welded (made from hot-dip galvanized steel) for connection of earthing systems, earth connections and reinforcements. With connection M12 or M16

Product name:  
**GE-P/(L)/VZ/(M12/M16)**  
Standard length: approx. 120 mm



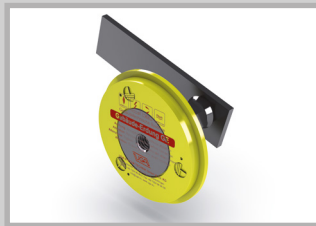
**Flexible penetration earthing GE-FD/(L)**  
Flexible, insulated entry to be encased flush in concrete; on both sides with connection M12. For wall thickness from 150 - 500 mm

Product name:  
**GE-FD/(L)/V4A/(M12/M16)**  
(L) = Standard length 500 mm or 320 mm



**Reinforcement earthing GE-A/(L)**  
Rigid earthing point for connecting to reinforcement and for encasing flush in concrete. With M12 connection

Product name:  
**GE-A/(L)/V4A/(M12/M16)**  
(L) = Earthing length in mm



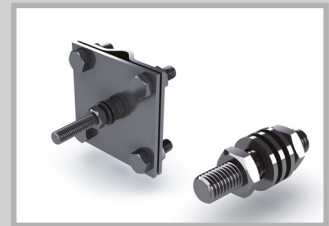
**Reinforcement earthing with iron strip 40 x 5 GE-AB**  
Rigid earthing point with welded iron strip (made from St37 steel) for welding with the reinforcement and for encasing flush in concrete. With M12 connection

Product name:  
**GE-AB/(L)/St37/(M12/M16)**  
Standard length 70 mm  
Length of iron strip: 300 mm



**Subsequent entry earthing GE-ND**  
Rigid entry for retrofitting; One side with connection M12 or M16, other side with cross clamp

Product name:  
**GE-ND/(L)/V4A/(M12/M16)**  
Standard wall thicknesses:  
250 mm and 420 mm



**Flat-round connectors**  
Product name:  
**GE-FRV/(L)/(VZ/V4A)/(M12/M16)**

**Connection bolt M12/M16**  
Product name:  
**GE-ABM/(L)/(VZ/V4A)/(M12/M16)**

Both connection elements are available in galvanized = VZ (for internal connection) and in stainless steel A4 = V4A (for external connection)