

RRD

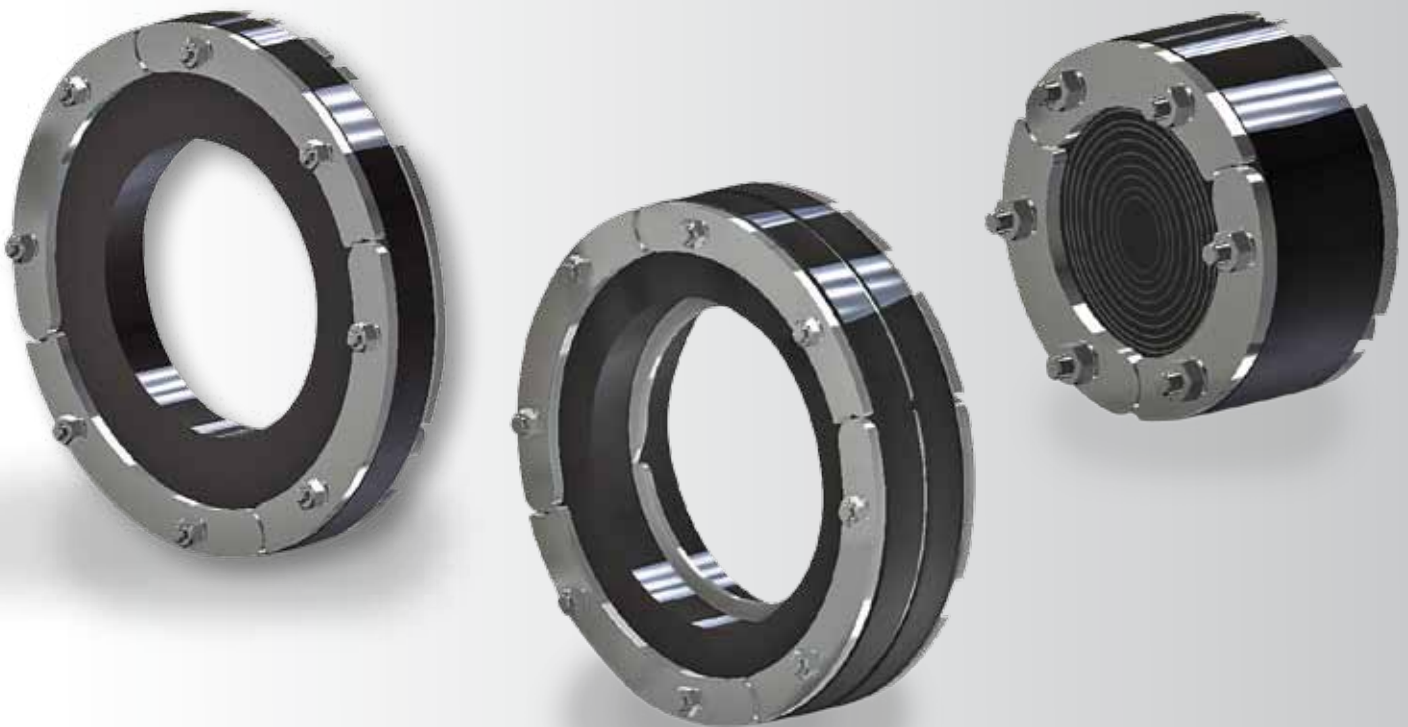
Annular space seal

RRD-WR

Annular space seal for corrugated pipe

RDZ

Annular space seal with onion ring technology



**24 hour
delivery service**
on demand


**Guarantee
of quality**
for all products

**Global
distribution
network**
for you on site

Service-Hotline
Tel. +49 7324 9696-33
we are happy
to assist you

RRD

Annular space seal

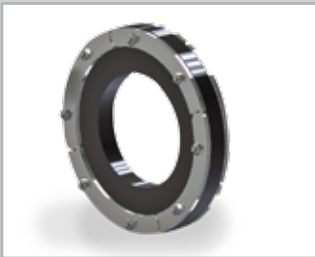
RDZ

Annular space seal with onion ring technology

► Field of application

Annular space seal RRD and annular space seal with onion cut technology RDZ are used for the quick and reliable sealing of pipes.

Annular space seals are **gas- and watertight** and suitable to seal **all standard sized medium pipes**. The system can be installed inside a core hole or casing tube.



Annular space seal RRD1
Made of EPDM-rubber, 1 layer, against non-pressing water. metal parts consist of A2 stainless steel.

Order no. **RRD1-(A)/(D)**
(A) = outside diameter of RRD1
△ inside diameter of core hole or casing tube
(D) = outside diameter of pipe (∅o)

Available versions:

RRD1-100/34	RRD1-100/43
RRD1-100/50	RRD1-100/63
RRD1-125/63	RRD1-125/75
RRD1-125/83	
RRD1-150/83	RRD1-150/92
RRD1-150/110	
RRD1-200/110	RRD1-200/118
RRD1-200/126	RRD1-200/135
RRD1-200/140	RRD1-200/160

Annular space seal RRD2
Made of EPDM-rubber, 2-layer against pressing water, metal parts made of A2 stainless steel.

Order no. **RRD2-(A)/(D)**
(A) = outside diameter of RRD2
△ inside diameter of core hole or casing tube
(D) = outside diameter of pipe (∅o)

Available versions:

RRD2-100/34	RRD2-100/43
RRD2-100/50	RRD2-100/63
RRD2-125/63	RRD2-125/75
RRD2-125/83	
RRD2-150/83	RRD2-150/92
RRD2-150/110	
RRD2-200/110	RRD2-200/118
RRD2-200/126	RRD2-200/135
RRD2-200/140	RRD2-200/160
RRD2-250/160	RRD2-250/170
RRD2-250/180	RRD2-250/200
RRD2-250/210	
RRD2-300/200	RRD2-300/210
RRD2-300/219	RRD2-300/225
RRD2-300/250	
RRD2-400/275	RRD2-400/280
RRD2-400/315	RRD2-400/326
RRD2-500/400	RRD2-500/429
RRD2-500/450	

Annular space seal RRD3
Made of EPDM-rubber, 3-layer Against pressing water, metal parts made of A2 stainless steel.

Order no. **RRD3-(A)/(D)**
(A) = outside diameter of RRD3
△ inside diameter of core hole or casing tube
(D) = outside diameter of pipe (∅o)

Available versions:

RRD3-100/34	RRD3-100/43
RRD3-100/50	RRD3-100/63
RRD3-125/63	RRD3-125/75
RRD3-125/83	
RRD3-150/83	RRD3-150/92
RRD3-150/110	
RRD3-200/110	RRD3-200/118
RRD3-200/126	RRD3-200/135
RRD3-200/140	RRD3-200/160
RRD3-250/160	RRD3-250/170
RRD3-250/180	RRD3-250/200
RRD3-250/210	
RRD3-300/200	RRD3-300/210
RRD3-300/219	RRD3-300/225
RRD3-300/250	
RRD3-400/275	RRD3-400/280
RRD3-400/315	RRD3-400/326
RRD3-500/400	RRD3-500/429
RRD3-500/450	

Annular space seal with onion ring technology RDZ1
Made of EPDM-rubber, 1-layer against non-pressing water, metal parts made of A2 stainless steel.

Order no. **RDZ1-(A)/(D1)-(Dn)**
(A) = outside diameter of RDZ1
△ inside diameter of core hole or casing tube
(D) = outside diameter of pipe (∅o)

Available versions:

RDZ1-100/63-50-43-34
RDZ1-125/83-63
RDZ1-150/110-92-83*
RDZ1-200/160-140-135-126-118-110



Annular space seal with onion rings RDZ2
Made of EPDM-rubber, split, 2-layer against pressing water, metal parts made of A2 stainless steel.

Order no. **RDZ2-(A)/G/(D1)-/Dn)**
(A) = outside-diameter of RDZ2
△ inside-diameter of core hole or casing tube
(D) = outside diameter of pipe (∅o)

Available version:
RDZ2-100/G/65-60-55-50-45-40-35-30-25-20
Also available in closed version.

* Example:

With system RDZ1-150/110- 92-83 you can seal a pipe with an outside diameter of 110 or 92 or 83 mm inside a core hole or a casing pipe with an inside-diameter of 150 mm. With the onion ring cuts the corresponding diameter can be chosen.

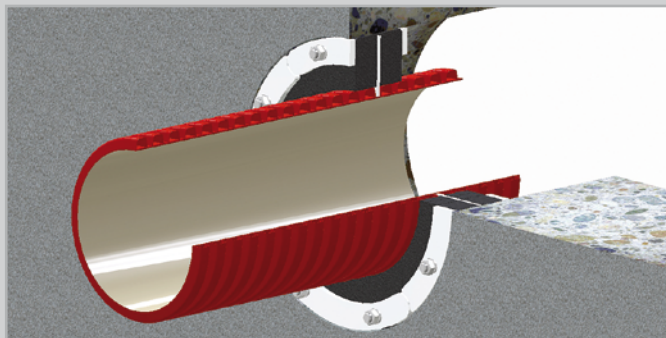
Please note that all versions of the systems RRD and RDZ are delivered as closed items (except RDZ2). Subsequently the RRD and RDZ systems can easily be split on site with the help of a knife, the parts made of stainless steel have to be put together offset after splitting.

RRD-WR

Annular space seal for corrugated pipe

► Experience a new way of sealing corrugated pipes!

The system **RRD-WR annular space seal for corrugated pipe** allows a quick and safe connection of corrugated pipes or district heating lines. The integrated back-up ring protects the corrugated pipe from deformation and damages. The sealing insert is delivered in split version and therefore suitable for subsequent installation.



► Field of application

- Sealing and connecting of corrugated pipes to building entries.
- Sealing of core holes or casing tubes with inside diameter 150 mm and outside diameter 200 mm.
- For corrugated pipes with outside diameter 110, 125 and 160 mm



Annular space seal RRD-WR1

With 1 layer of EPDM-rubber against non-pressing water, split version with integrated back-up ring, metal parts made of A2 stainless steel.

Order no. **RRD-WR1-(A)/(D)**

(A) = outside diameter of RDZ-WR
△ inside diameter of core hole or pipe

(D) = outside diameter of corrugated pipe (Øa)

Available versions:

RRD-WR1-100/50
RRD-WR1-100/63
RRD-WR1-125/63
RRD-WR1-125/75
RRD-WR1-150/90
RRD-WR1-150/110
RRD-WR1-200/110
RRD-WR1-200/120
RRD-WR1-200/125
RRD-WR1-200/145
RRD-WR1-200/160



Annular space seal RRD-WR2

with 2-layers of EPDM-rubber against pressing water, split version with integrated back-up ring, metal parts made of A2 stainless steel.

Order no. **RRD-WR2-(A)/(D)**

(A) = outside diameter of RDZ-WR
△ inside diameter of core drilled hole or pipe

(D) = outside diameter of corrugated pipe (Øa)

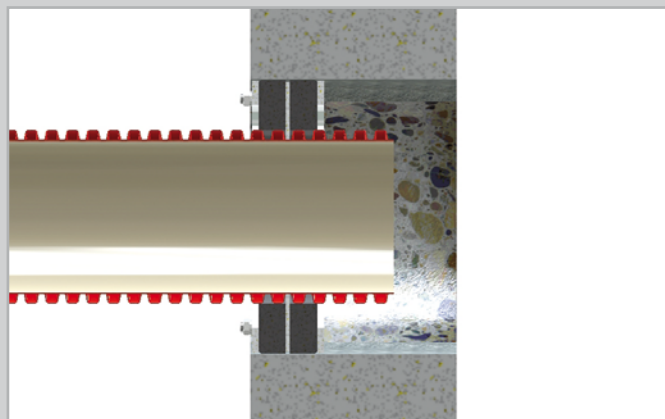
Available versions:

RRD-WR2-100/50
RRD-WR2-100/63
RRD-WR2-125/63
RRD-WR2-125/75
RRD-WR2-150/90
RRD-WR2-150/110
RRD-WR2-200/110
RRD-WR2-200/120
RRD-WR2-200/125
RRD-WR2-200/145
RRD-WR2-200/160

► Advantages:

- High quality materials like A2 stainless steel and EPDM rubber
- Gas- and watertight (1-layer version up to 2,5 bar, 2 layer version watertight up to 5 bar)
- With integrated back-up ring for protection
- Split version for subsequent installation
- Cost-efficient standard sizes
- Fixation of the corrugated pipe in the core hole
- Quick and easy installation
- Soundproofed
- Protection against rodents

► Sectional drawing after installation:



The sealing insert RRD-WR for corrugated pipes, suitable for subsequent installation, is delivered in split version.



Measurement chart for outside pipe diameters (D)

Material/version of pipe	Copper pipes	Steel pipes	Steel pipes with 2 layers of external PE wrapping	Steel pipes with 3 layers of external PE wrapping	Steel pipes with socket	SML and TML pipes	Ductile cast iron pipes	Hard PE-pipes district heating pipe depending on producer	Vitrified clay pipes standard version	Vitrified clay pipes strengthened version	PE-pipes HDPE PE 63 PE 80 PE 100	KG 2000 HT/ KA pipes KG-pipes	PVC pressure pipes PN 4 - 25	PP PVC-C ABS
DIN/EN	1057 12449	10255 10220	10287	10285	1123-2	877	545 598 969		1230	1230	12201	19534 19538	19532	19561 16891 19531
Zoll	DN													
	4	4												
	6	6	10,2	13,8	15,2									
	8	8	13,5	17,1	18,5									
3/8	10	10	16 17,2	20,8	22,2						10		16	
	12	12									12			
1/2	15	15 18	20 21,3	24,9	26,3			110			16		20	
3/4	20		26,9	30,5	31,9			90/125			20		25	
	22	22												
1	25	28	33,7	37,3	38,7			90/125			25		32	
1 1/4	32	35	42,4	46	47,4			110/125			32		40	40
1 1/2	40	42	48,3	51,9	53,3	42	48	110/125			40	40	50	50
2	50	54	60,3	63,9	65,3	53	58	125/140	78+/-3		50/63	50	63	
2 1/2	65		76,1	79,7	81,1			140/160	105+/-4					
	70	70				73								
	75	76,1									75	75	75	75
3	80	88,9	88,9	92,5	93,9	89	83	89	160/180					
	90										90	90	90	90
4	100	108	114,3	117,9	119,3	102	110	118	200/225	132+/-4				
	110										110	110	110	110
5	125	133	139,7	143,7	145,1	133	135	144	225/250	160+/-4	125	125	140	125
6	150	159	165,1	172,3	173,7	159	160	170	250/280	187+/-5				
	160										160	160	160	160
8	200	219	219,1	223,1	224,5	219	210	222	315/355	242+/-5	200	200	225	200
	225										225			
10	250	267	273	277,4	278,4	273	275	274	400/450	296+/-6	318+/-6	250	250	250
12	300		323,9	328,3	329,7	324	326	326	450/500	350+/-7	374+/-7	315	315	315
14	350		355,6	360	361,4			378	500	404+/-7	430+/-7	355		
16	400		406,4	410,8	412,2		429	429	560/630	460+/-8	490+/-8	400	400	400
	450							480		516+/-8	548+/-8	450		
	500		508	512,4	513,8			532		573+/-9	607+/-9	500	500/560	500
	600		610					635		681+/-12	721+/-12	600	630	630
	630									600	630	630	630	630
	700							738		790+/-15	831+/-15	710		
	800							842		895+/-17	941+/-17	800		

Errors and omissions excepted!

Indications in millimeter which are divided by a slash (for example 160/180) refer to the different possible outside diameters of the particular pipes. Please always name the actual outside diameter of the pipe when ordering.

UGA SYSTEM-TECHNIK GmbH & Co. KG
Building Technology Systems

Heidenheimer Str. 80 – 82
89542 Herbrechtingen/Germany
P.O. Box 12 61, 89539 Herbrechtingen/Germany
Phone +49 7324 9696-0, Fax +49 7324 9696-96
info@uga.eu, www.uga.eu

We deliver replacement parts, if there are material defects which disturb the function. We do not deliver replacement parts for defects which result on the transport or the storage of the goods, or which are based on inaccurate installation or the results of it. Our information is based on the current state of technical evidence. We reserve the right to make technical amendments. Because of the diversity of possible influences during the installation and application our technical information does not release the user from own tests and checks.

All systems of UGA have to be installed according to the corresponding installation advice.