

# SHDD

## Gooseneck duct for flat roofs



**24 hour delivery  
service**  
upon request

**Quality  
guarantee**  
on all products



**Worldwide sales  
network**  
for you locally

**Service hotline**  
Tel. +49 7324 9696-33  
We are happy to help you

# SHDD

## Gooseneck duct for flat roofs



### Gooseneck duct in four sizes

Øi 100 mm, e.g. for 4 cables with Ø 28 mm

Product name:

**SHDD100/(separate/together)/VZ**

Øi 150 mm, e.g. for 7 cables with Ø 28 mm

Product name:

**SHDD150/(separate/together)/VZ**

Øi 200 mm, e.g. for 12 cables with Ø 28 mm

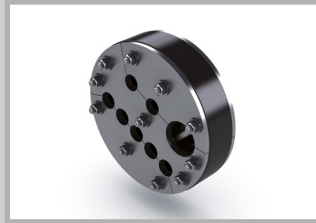
Product name:

**SHDD200/(separate/together)/VZ**

Øi 300 mm, e.g. for 20 cables with Ø 28 mm

Product name:

**SHDD300/(separate/together)/VZ**



### Gasket inserts for gooseneck duct

For SHDD 100–VZ, e.g. for 4 cables with Ø 28 mm

Product name:

**GPD100/G/60/V2A/EPDM  
(Z)x(D)**

For SHDD 150–VZ, e.g. for 7 cables up to 28 mm

Product name:

**GPD150/G/60/V2A/EPDM  
(Z)x(D)**

For SHDD 200–VZ, e.g. for 12 cables with Ø 28 mm

Product name:

**GPD200/G/60/V2A/EPDM  
(Z)x(D)**

for SHDD 300–VZ, e.g. for 20 cables with Ø 28 mm

Product name:

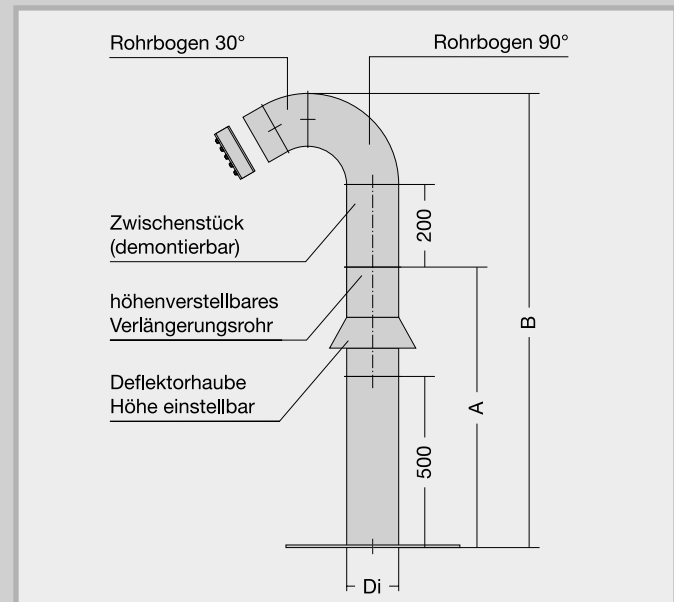
**GPD300/G/60/V2A/EPDM  
(Z)x(D)**

(Z) = Number of cables

(D) = Diameter of the cables

### ► Advantages

- Suitable for all roof structures
- Easy insertion of cables
- The split gasket insert can be used for variable fitting, changing and retrofitting of cables
- Height and direction can also be changed after assembly, can be swivelled 360°
- Hot-dip galvanized elements can also be assembled on site, resulting in cost-effective transport and easier installation on the roof
- Available with 100, 150, 200 and 300 mm diameter
- Dowel flange made as standard as adhesive flange in accordance with DIN 18533 120 mm circumferential for non-pressurised water
- Also available with fixed and loose flange designs in accordance with DIN 18533
- Special versions on request
- Available in individual parts (single) or assembled (together)



### ► Technical data

Di in mm	A in mm		B in mm	
	from	to	from	to
100	600	950	1050	1400
150	600	950	1175	1525
200	600	950	1300	1650
300	600	950	1550	1900

### UGA SYSTEM-TECHNIK GmbH & Co. KG

Technical building systems

Heidenheimer Str. 80 – 82, 89542 Herbrechtingen,  
Germany

Tel. +49 7324 9696-0, Fax +49 7324 9696-96

info@uga.eu, www.uga.eu

We shall supply replacements for all parts that impair functionality due to material defects. No replacements will be provided for defects that are due to transport or storage or are caused by incorrect processing or installation or consequences of such. Our information is based on current technical knowledge. Subject to technical changes. Because of the abundance of possible influences during assembly and use, our information does not exempt processors and users from their own trials and tests.

**The corresponding installation instructions apply to all UGA products.**